

Easy to Use, Delivers Beautiful Pictures



Silver



Black

| | | | | |
|------------------------------------|--|--------------------|-----------------------------------|----------------|
| 10.2 Megapixels | Fujinon 3x Zoom | ISO 1600 | 2.7" LCD (230,000 dots) | Face Detection |
| PS (Picture Stabilization) Mode | SR AUTO Auto Scene Recognition | Panorama Mode | Micro Thumbnail | AA Battery |

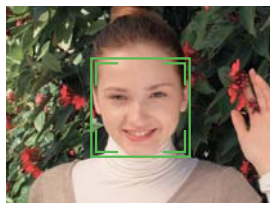


Auto Scene Recognition

In SR Auto (Auto Scene Recognition) mode, the A170 intelligently recognizes 6 different scene types and optimizes the camera settings to capture beautiful pictures automatically.



Portrait



Landscape



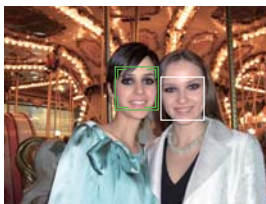
Night



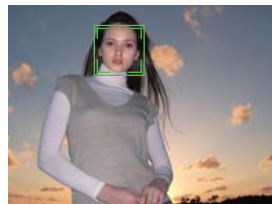
Macro



Night Portrait



Backlit Portrait





Panorama Mode

Capture panoramic photos easily.* Panorama mode lets you capture consecutive shots and automatically combines them into a beautiful panoramic image that is automatically saved.

*Use a tripod or monopod for best results. Only the panoramic picture is saved; individual photos are not. Exposure and white balance are set with the first picture and flash is suppressed. Number of recorded pixels is limited to 3 megapixels.



Picture Stabilization / Anti-blur Mode

Picture Stabilization / Anti-blur Mode automatically corrects for camera shake and subject blur, helping you to capture fleeting moments in crisp stop-action with background detail intact.



Micro Thumbnail View

Up to 100 pictures can be viewed at a time in a 10x10 array of micro thumbnails. Convenient for smooth and easy playback.



AA Battery Powered

Never miss a photo opportunity with the convenience of AA battery power.

SPECIFICATIONS

| | |
|---|---|
| Number of effective pixels ¹ | 10.2 million pixels |
| CCD sensor | 1/2.3-inch CCD |
| Storage media | Internal memory (Approx. 10MB) / SD memory card / SDHC memory card ² |
| File format | Still image: JPEG (Exif Ver. 2.2*) / Movie: AVI (Motion JPEG) with sound (Design rule for Camera File system compliant / DPOF-compatible) |
| Number of recorded pixels | Still image: 3,664 × 2,748 (10M) / 3,664 × 2,442 (3:2 format) / 2,592 × 1,944 / 2,048 × 1,536 / 1,600 × 1,200 / 640 × 480 |
| Lens | Fujinon 3× optical zoom lens, F2.9 (Wide) - F5.2 (Telephoto) |
| Lens focal length | f=5.7 - 17.1 mm, equivalent to 32 - 96 mm on a 35 mm camera |
| Digital zoom | Approx. 5.7× |
| Aperture | Wide: F2.9 - F5.5, Telephoto: F5.2 - F10 |
| Focus distance (from lens surface) | Normal: Wide: Approx. 60 cm / 2.0 ft. to infinity, Telephoto: Approx. 60 cm / 2.0 ft. to infinity Macro: Wide: Approx. 10 cm - 70 cm / 3.9 in. - 2.3 ft., Telephoto: Approx. 35 cm - 70 cm / 1.1 ft. - 2.3 ft. |
| Sensitivity | Auto / Equivalent to ISO 100 / 200 / 400 / 800 / 1600 (Standard Output Sensitivity) |
| Shooting modes | Portrait, Landscape, Sport, Night, Night (Tripod), Fireworks, Sunset, Snow, Beach, Panorama, Party, Flower, Text, Baby, PS (Anti-blur), Natural Light, Movie |
| Shutter speed | (Auto mode) 1/4 sec. to 1/1400 sec. (All other modes) 8 sec. to 1/1400 sec. |
| LCD monitor | 2.7-inch, Approx. 230,000 dots, TFT color LCD monitor, Approx. 96% coverage |
| Movie recording | 640 × 480 pixels / 320 × 240 pixels / (30 frames/sec.) with monaural sound |
| Power supply ^{3,4} | 2 × AA type alkaline batteries (included), 2 × AA type Ni-MH batteries (sold separately) |
| Dimensions | 93.0 (W) × 60.0 (H) × 21.9 (D) mm / 3.7 (W) × 2.4 (H) × 0.9 (D) in. (excluding accessories and attachments) |
| Weight | Approx. 120 g / 4.2 oz. (excluding accessories, battery and memory card) |

¹ : Number of effective pixels: The number of pixels on the image sensor which receive input light through the optical lens, and which are effectively reflected in the final output data of the still image.

² : Please see the Fujifilm website to check memory card compatibility.

³ : Exif 2.2 is a digital camera file format that contains a variety of shooting information for optimal printing.

⁴ : Manganese dry, nickel-cadmium and lithium AA batteries cannot be used with this product.

For more information, please visit our Website:

http://www.fujifilm.com/products/digital_cameras/index.html

Specifications are subject to change without notice.
All sample photos are simulated images.